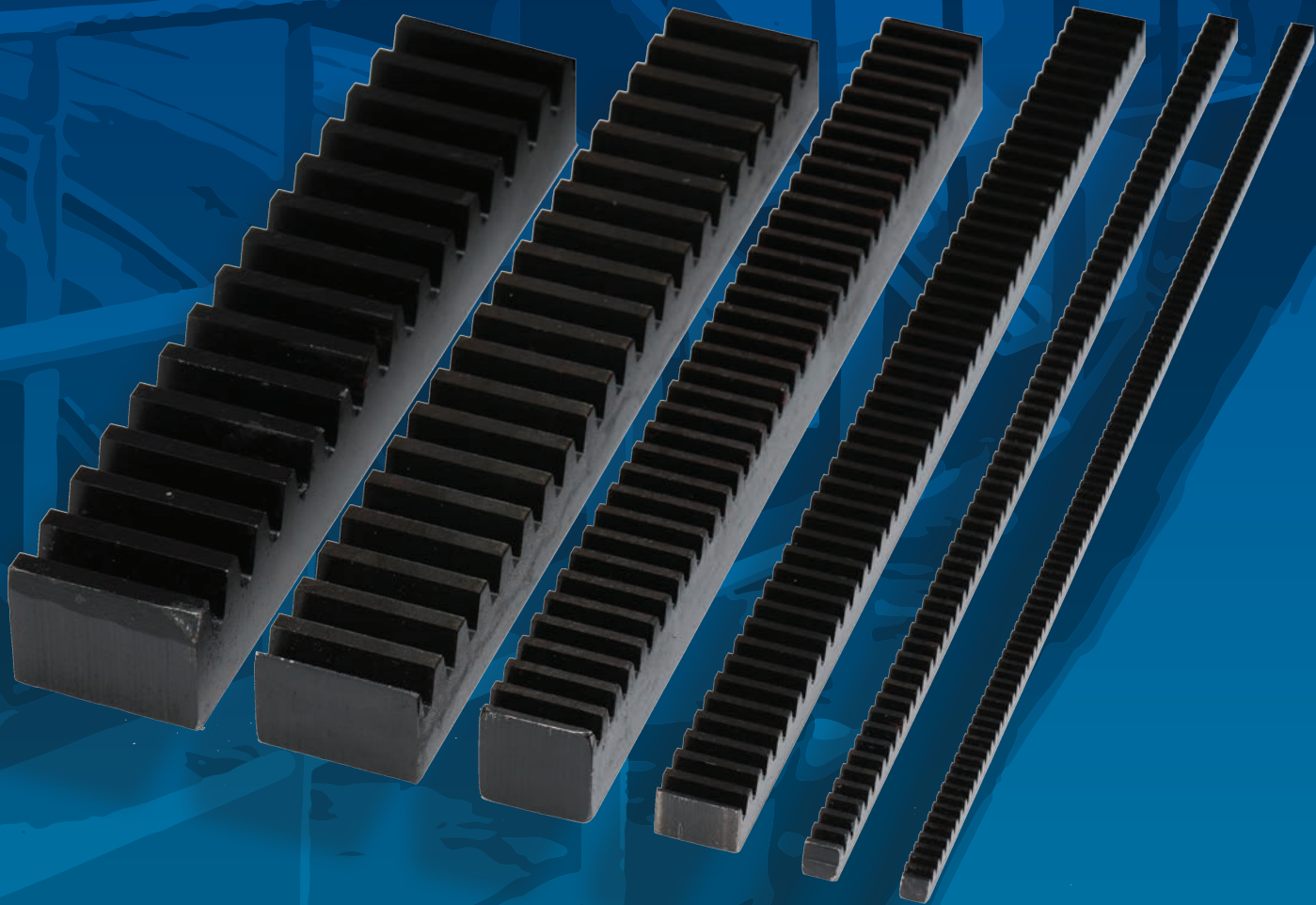


Martin

MACHINED GEAR RACK

Stocked in Steel
14½° & 20° PA
MTO Capabilities
Up to 12' long

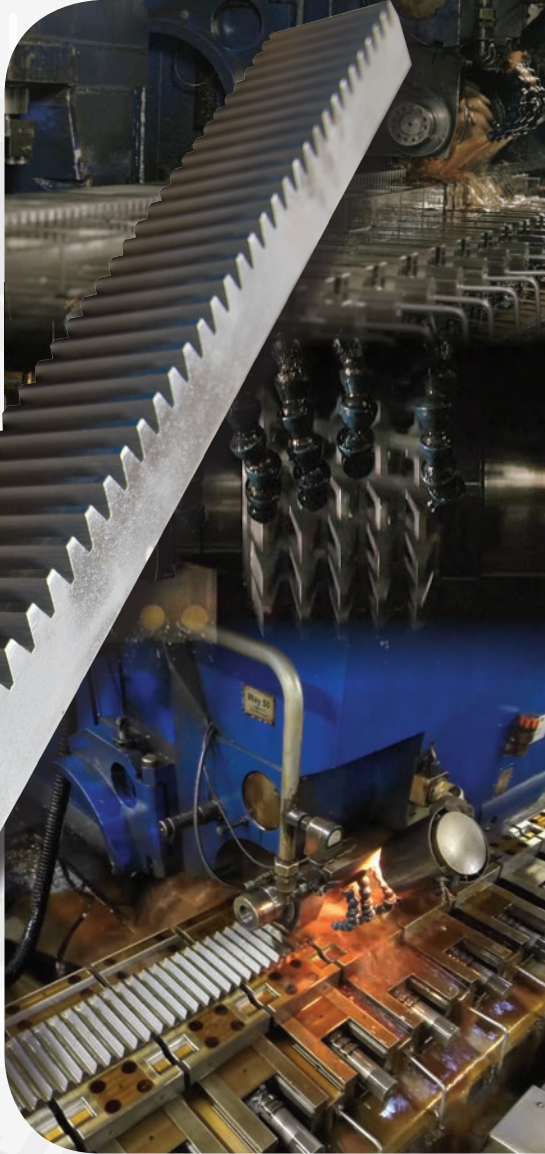


Martin manufactures **Spur Gears** and **Gear Rack, Bevel Gears, Miter Gears** and **Worm Gears**. With a vast inventory of raw materials, modern machine tool capacity and a pro-service attitude, *Martin* makes short work of a quick delivery on all specialty gears.

Rack & Pinions

Change rotary motion to linear motion or linear motion to rotary motion.

- **Rack Gear** is a straight bar with either straight or helical teeth.
- **Pinion Gear** is a standard **Spur** or **Helical Gear**



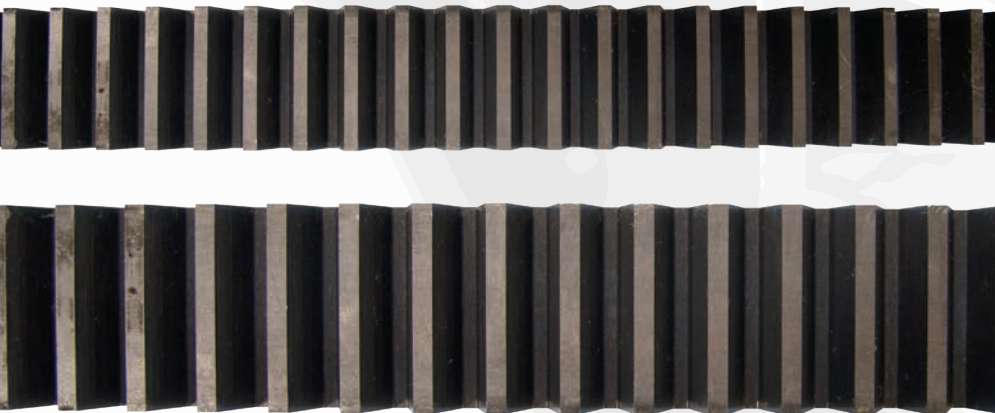
Helical Gear

Spur Gear



Features:

- Manufactured from cold drawn carbon steel
- Available in $14\frac{1}{2}^\circ$ and 20° Pressure Angle
- Virtually any length, width or thickness
- *Martin* can provide precision end milling for matching extra long lengths
- Other MTO materials: 4140, 8620, Nylon, etc.



Standard Face Width

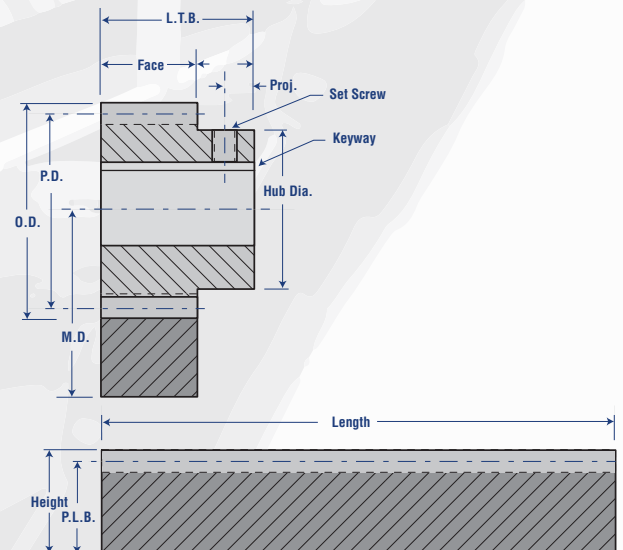
Steel — 14½° & 20° Pressure Angle

Part Number		Pitch	Face Width (In)	Overall Thickness (In)	Boston Gear	EPT (Emerson)
14½° PA	20° PA				14½° PA	14½° PA
R3X2	TR3X2	3	3	1-1/2	—	—
R3X4	TR3X4	3	3	1-1/2	L524-4	4NSR3x1 1/2
R3X6	TR3X6	3	3	1-1/2	L524-6	6NSR3x1 1/2
R4X2	TR4X2	4	2	1-1/2	—	—
R4X4	TR4X4	4	2	1-1/2	L523-4	4NSR4x1 1/2
R4X6	TR4X6	4	2	1-1/2	L523-6	6NSR4x1 1/2
RA4X2	—	4	2	2	—	—
RA4X4	—	4	2	2	—	4NSR4x2
RA4X6	—	4	2	2	—	6NSR4x2
R5X2	TR5X2	5	1-3/4	1-1/4	—	—
R5X4	TR5X4	5	1-3/4	1-1/4	L522-4	4NSR5x1 1/4
R5X6	TR5X6	5	1-3/4	1-1/4	L522-6	6NSR5x1 1/4
RA5X2	—	5	1-3/4	1-1/2	—	—
RA5X4	—	5	1-3/4	1-1/2	—	4NSR5x1 1/2
RA5X6	—	5	1-3/4	1-1/2	—	6NSR5x1 1/2
R6X2	—	6	1-1/2	1	—	—
R6X4	—	6	1-1/2	1	L520-4	4NSR6x1
R6X6	—	6	1-1/2	1	L520-6	6NSR6x1
RA6X2	TR6X2	6	1-1/2	1-1/2	—	—
RA6X4	TR6X4	6	1-1/2	1-1/2	L521-4	4NSR6x1 1/2
RA6X6	TR6X6	6	1-1/2	1-1/2	L521-6	6NSR6x1 1/2
R8X2	—	8	1-1/4	3/4	—	—
R8X4	—	8	1-1/4	3/4	L518-4	4NSR8x3/4
R8X6	—	8	1-1/4	3/4	L518-6	6NSR8x3/4
RA8X2	TR8X2	8	1-1/4	1-1/4	—	—
RA8X4	TR8X4	8	1-1/4	1-1/4	L519-4	4NSR8x1 1/4
RA8X6	TR8X6	8	1-1/4	1-1/4	L519-6	6NSR8x1 1/4
R10X2	—	10	1	5/8	—	—
R10X4	—	10	1	5/8	L516-4	4NSR10x5/8
R10X6	—	10	1	5/8	L516-6	6NSR10x5/8
RA10X2	TR10X2	10	1	1	—	—
RA10X4	TR10X4	10	1	1	L517-4	4NSR10x1
RA10X6	TR10X6	10	1	1	L517-6	6NSR10x1
R12X2	—	12	3/4	1/2	—	—
R12X4	—	12	3/4	1/2	L514-4	4NSR12x1 1/2
R12X6	—	12	3/4	1/2	L514-6	6NSR12x1 1/2
RA12X2	TR12X2	12	3/4	3/4	—	—
RA12X4	TR12X4	12	3/4	3/4	L515-4	4NSR12x3/4
RA12X6	TR12X6	12	3/4	3/4	L515-6	6NSR12x3/4
R16X2	—	16	5/16	5/16	—	—
R16X4	—	16	5/16	5/16	L510-4	4NSR16x5/16
R16X6	—	16	5/16	5/16	L510-6	6NSR16x5/16
RA16X2	TR16X2	16	1/2	1/2	—	—
RA16X4	TR16X4	16	1/2	1/2	L512-4	4NSR16x1 1/2
RA16X6	TR16X6	16	1/2	1/2	L512-6	6NSR16x1 1/2
R20X2	TR20X2	20	3/8	3/8	L509-2	2NSR20x3/8
R20X4	TR20X4	20	3/8	3/8	L509-4	4NSR20x3/8
R20X6	TR20X6	20	3/8	3/8	L509-6	6NSR20x3/8
R24X2	—	24	1/4	1/4	L505-2	2NSR24x1 1/4
R24X4	—	24	1/4	1/4	L505-4	4NSR24x1 1/4
R24X6	—	24	1/4	1/4	—	6NSR24x1 1/4

Wide Face Width

Steel — 20° Pressure Angle

Part Number	Pitch	Face Width (In)	Overall Thickness (In)	Boston Gear	EPT (Emerson)
20° PA					
R204X2	4	3-1/2	2	—	—
R204X4	4	3-1/2	2	L204-4	4YSR4x2
R204X6	4	3-1/2	2	L204-6	6YSR6x2
R205X2	5	2-1/2	1-1/2	—	—
R205X4	5	2-1/2	1-1/2	L205-4	4YSR5x1 1/2
R205X6	5	2-1/2	1-1/2	L205-6	6YSR5x1 1/2
R206X2	6	2	1-1/2	—	—
R206X4	6	2	1-1/2	L206-4	4YSR6x1 1/2
R206X6	6	2	1-1/2	L206-6	6YSR6x1 1/2
R208X2	8	1-1/2	1-1/2	—	—
R208X4	8	1-1/2	1-1/2	L208-4	4YSR8x1 1/2
R208X6	8	1-1/2	1-1/2	L208-6	6YSR8x1 1/2
R2010X2	10	1-1/4	1-1/4	—	—
R2010X4	10	1-1/4	1-1/4	L2010-4	4YSR10x1 1/4
R2010X6	10	1-1/4	1-1/4	L2010-6	6YSR10x1 1/4
R2012X2	12	1	1	—	—
R2012X4	12	1	1	L2012-4	4YSR12x1
R2012X6	12	1	1	L2012-6	6YSR12x1
R2016X2	16	3/4	3/4	—	—
R2016X4	16	3/4	3/4	L2016-4	4YSR16x3/4
R2016X6	16	3/4	3/4	L2016-6	6YSR16x3/4
R2020X2	20	1/2	1/2	—	—
R2020X4	20	1/2	1/2	L2020-4	4YSR20x1 1/2
R2020X6	20	1/2	1/2	L2020-6	6YSR20x1 1/2



Martin

There's a Martin Near You

Locations



USA Corporate Offices Sales & Manufacturing
 Arlington, TX
 817-258-3000 (FAX 817-258-3333)

Regional Manufacturing Plants
 Albemarle, NC
 704-982-9555 (FAX 704-982-9599)
 Atlanta, GA
 404-292-8744 (FAX 404-292-7771)
 Burleson, TX
 817-295-7151 (FAX 817-447-3840)
 Danielsville, PA
 610-837-1841 (FAX 610-837-7337)
 Ft. Worth, TX
 817-258-3000 (FAX 817-258-3173)
 Montpelier, OH
 419-485-5515 (FAX 419-485-3565)
 Sacramento, CA
 916-441-7172 (FAX 916-441-4600)

Branch Manufacturing Plants
 Boston, MA
 508-634-3990 (FAX 508-634-3998)
 Charlotte, NC
 704-394-9111 (FAX 704-394-9122)
 Chicago, IL
 847-298-8844 (FAX 847-298-2967)
 Denver, CO
 303-371-8466 (FAX 303-371-7116)
 Houston, TX
 713-849-4330 (FAX 713-849-4807)
 Kansas City, MO
 816-231-5575 (FAX 816-231-1959)
 Los Angeles, CA
 323-728-8117 (FAX 323-722-7526)
 Minneapolis, MN
 952-829-0623 (FAX 952-944-9385)
 Nashville, TN
 615-871-4730 (FAX 615-871-4125)
 Pittsburgh, PA
 724-452-4555 (FAX 724-452-5794)
 Portland, OR
 503-223-7261 (FAX 503-221-0203)
 Tampa, FL
 813-623-1705 (FAX 813-626-8953)

Manufacturing Only
 Abilene, TX • Clarksville, TX
 Dallas, TX • Mansfield, TX
 Paragould, AR

CANADA
 Cambridge, Ontario
 519-621-0546 (FAX 519-621-4413)
 Edmonton, Alberta
 780-450-0888 (FAX 780-465-0079)
 Mississauga, Ontario
 905-670-1991 (FAX 905-670-2110)

MEXICO
 Guadalajara, JAL
 +52 33-3283-1188
 (FAX +52 33-3271-8450)
 Monterrey, N.L.
 +52 811 156 6830
 (FAX +52 81-1156-6833)
 Toluca, MEX
 +52 722 276 0800
 (FAX +52 722-276-0801)

BRAZIL
 São Paulo, SP
 +55 19 3877 9400
 (FAX +55 19-3877-9429)

martinsprocket.com

Martin Sales and Engineering will work with you to completely solve your belt conveying needs. Since there are infinite amounts of conveying possibilities and configurations our sales and engineering staff are prepared to assist you with a custom solution.

Call *Martin*, we will be happy to assist you!



Free Download Maintenance and Troubleshooting Guide

Scan to download

