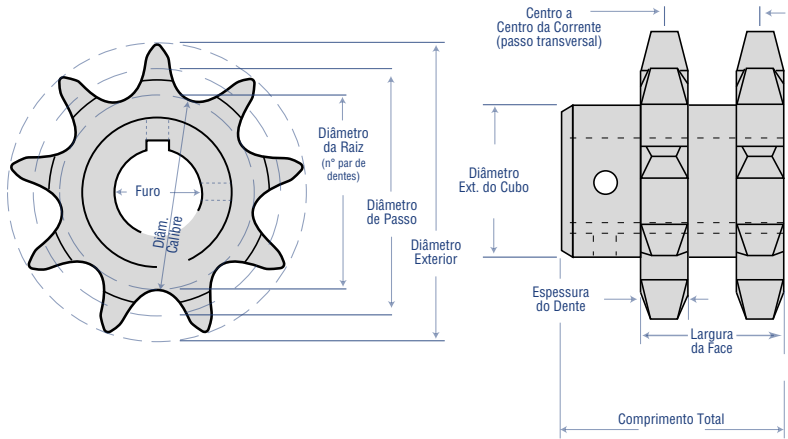




Nomenclatura de SPROCKETS



Nº de Fileiras

Sem prefixo Simples

D Duplo

E Triplo

F Quádruplo

DS Duplo Simples

D 160 B 16 H 2 1/4

Furo

Instruções Especiais

H Dentes Endurecidos

SS Aço Inox

Nº de Dentes

Passo da Corrente - Norma ANSI (medida em oitavos)

25 = 2/8 = 1/4"

60 = 6/8 = 3/4"

160 = 16/8 = 2"

35 = 3/8 = 3/8"

80 = 8/8 = 1"

180 = 18/8 = 2-1/4"

40 = 4/8 = 1/2"

100 = 10/8 = 1-1/4"

200 = 20/8 = 2-1/2"

41 = 4/8 = 1/2"

120 = 12/8 = 1-1/2"

240 = 24/8 = 3"

50 = 5/8 = 5/8"

140 = 14/8 = 1-3/4"

Tipo de Sprocket

A Apenas Disco

B Cubo de um Lado

C Cubo ambos Lados

D Cubo Desmontável

JA, SH,... Bucha QD

BTB Bucha Taper

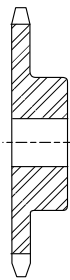
H, P, Q,... Bucha MST®

BS Furo na medida

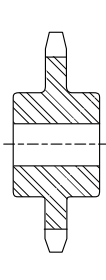
Tipos de Sprockets



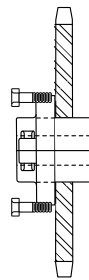
Simples
Tipo A
sin Cubo
Ex: 25A40



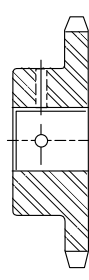
Simples
Tipo B
Cubo 1 lado
Ex: 35B20



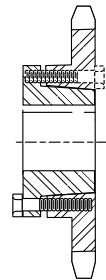
Simples
Tipo C Maza
Cubo 2 lados
Ex: 60C17



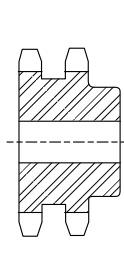
Simples
Tipo D
Cubo Destacável
Ex: 100D30



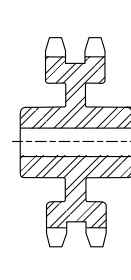
Tipo BS
Furo
na medida
Ex: 50BS16 1



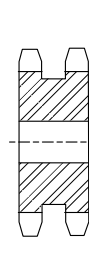
Simples
Bucha QD
Ex: 35SH40



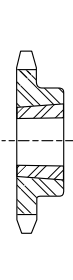
Duplo
Tipo B
Ex: D35B19H



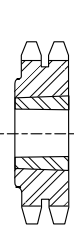
Duplo
Tipo C
Ex: D60C72



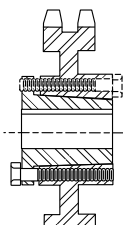
Duplo
Simples
Ex: DS40A19



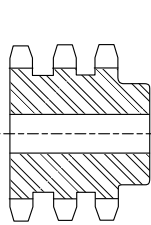
Simples
Bucha Taper
Tipo B
Ex: 50BTB16



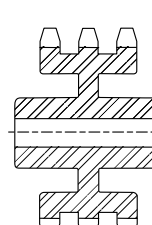
Duplo
Bucha Taper
Ex: D50BTB21



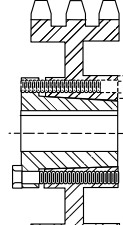
Duplo
Bucha QD
Ex: D80E52



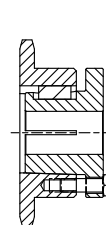
Tripló
Tipo B
Ex: E60B12



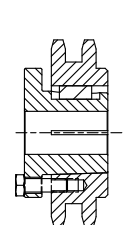
Tripló
Tipo C
Ex: E60C72



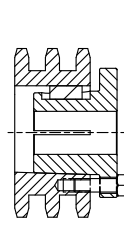
Tripló
Bucha QD
Ex: E60E68



Simples
Bucha MST®
Ex: 50P24



Duplo
Bucha MST®
Ex: D80R60



Tripló
Bucha MST®
Ex: E60Q21

pt.martinsprocket.com - +55 (19) 3877 9400

COPYRIGHT© 2021 • MARTIN SPROCKET & GEAR, INC. • TODOS OS DIREITOS RESERVADOS • CARD-SPK-P • 0721